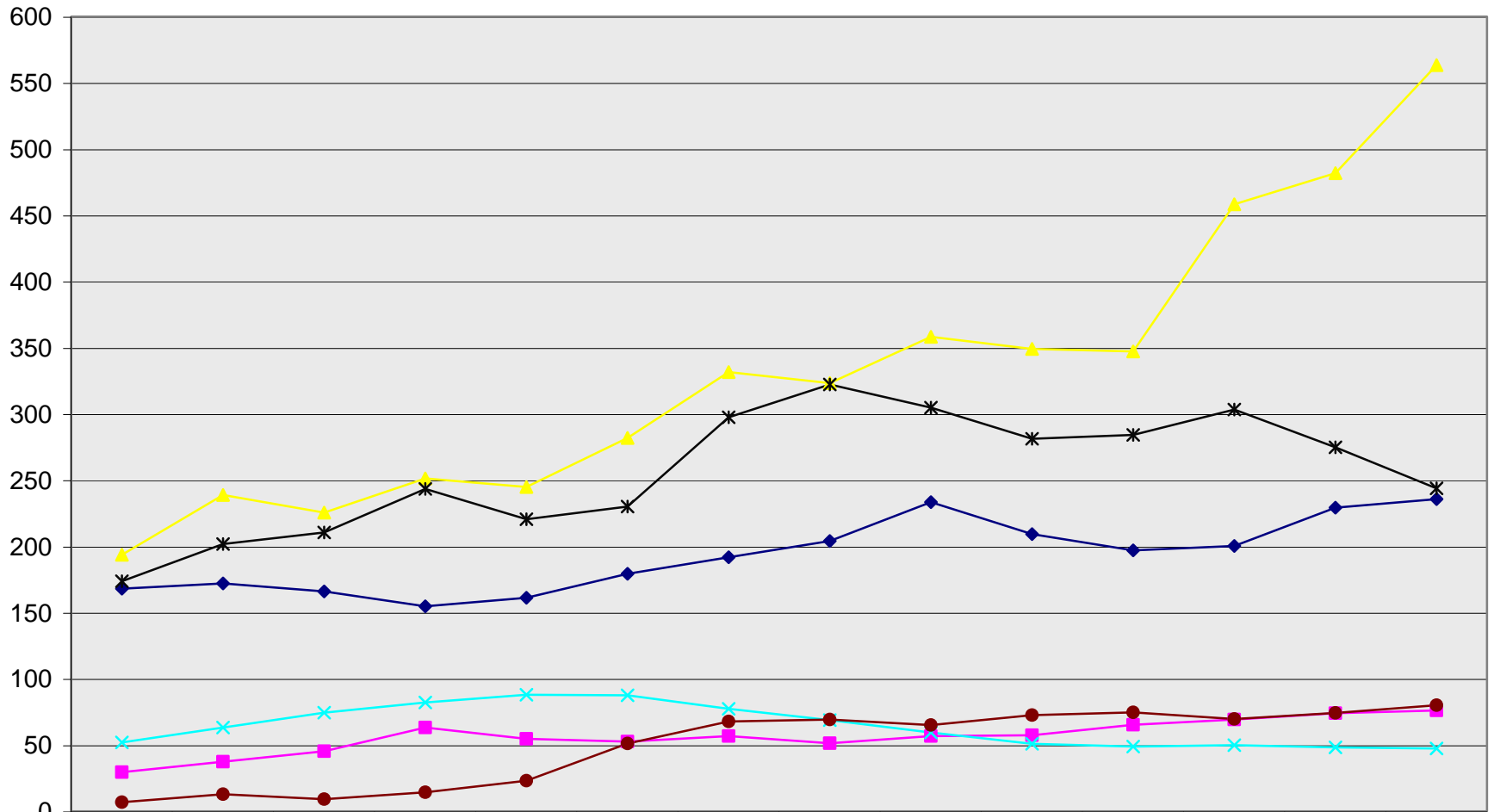


Annualized Undergraduate Equivalent Enrolments Taught (EET) - Human and Social Development



	1990/91	1991/92	1992/93	1993/94	1994/95	1995/96	1996/97	1997/98	1998/99	1999/00	2000/01	2001/02	2002/03	2003/04
◆ Child and Youth Care	168.2	172.1	166.1	154.8	161.3	179.3	191.9	204.0	233.5	209.3	197.1	200.3	229.3	235.8
■ Health Information Sciences	29.6	37.5	45.3	63.3	54.8	52.7	56.8	51.4	56.7	57.4	65.4	69.2	74.0	76.2
▲ Nursing	193.6	238.8	225.6	251.3	244.9	282.0	331.6	323.2	358.3	349.2	347.3	458.4	481.8	563.3
✕ Public Administration	52.0	63.2	74.5	82.1	87.9	87.5	77.3	69.0	59.5	51.0	48.8	49.9	48.2	47.4
* Social Work	173.7	201.7	210.5	243.5	220.5	230.1	297.4	322.2	304.7	281.3	284.2	303.4	274.8	243.8
● Taught at Fac. Level	6.8	13.0	9.2	14.3	23.1	51.1	67.9	69.3	65.1	72.6	74.7	69.7	74.3	80.2

Source: ClassPops (ARAI Table 1)
University of Victoria

Institutional Planning & Analysis
March 4, 2004